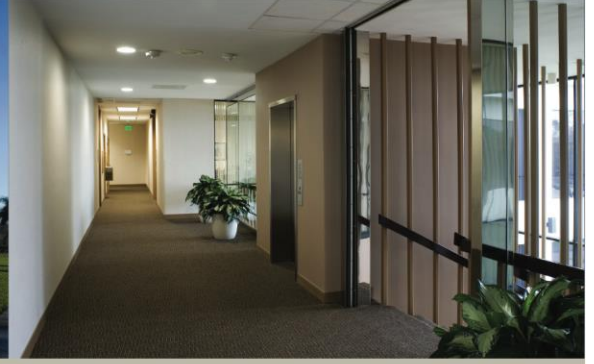


# BAYPOINT

COMMERCE CENTER

# MADISON

BUILDING 40,000 SF



Baypoint Commerce Center is currently undergoing an extensive multi-million dollar renovation and modernization project that will make it the office destination of choice for companies of all sizes in the Tampa Bay area. Upgrades include:

- Renovated common area lobbies
- New exterior landscaping design
- New monument and directional signage
- Upgraded parking areas
- New site, landscape and building lighting
- New patios, sidewalks and benches

## DESCRIPTION AND LOCATION

- 15-building office park in campus style environment
- 5/1,000 SF parking ratio
- Ideally located with easy access to all major roads and bridges
- Close to restaurants and shopping destinations
- Served by the Pinellas Suncoast Transit Authority



### For leasing information, contact:

BARRY HANERFELD  
727.576.1400  
Barry.Hanerfeld@cbre.com

**CBRE**

Gandy Boulevard and Dr. Martin Luther King Jr. Street North, St. Petersburg, FL 33702

[www.baypointcommerce.com](http://www.baypointcommerce.com)

# BAYPOINT

COMMERCE CENTER

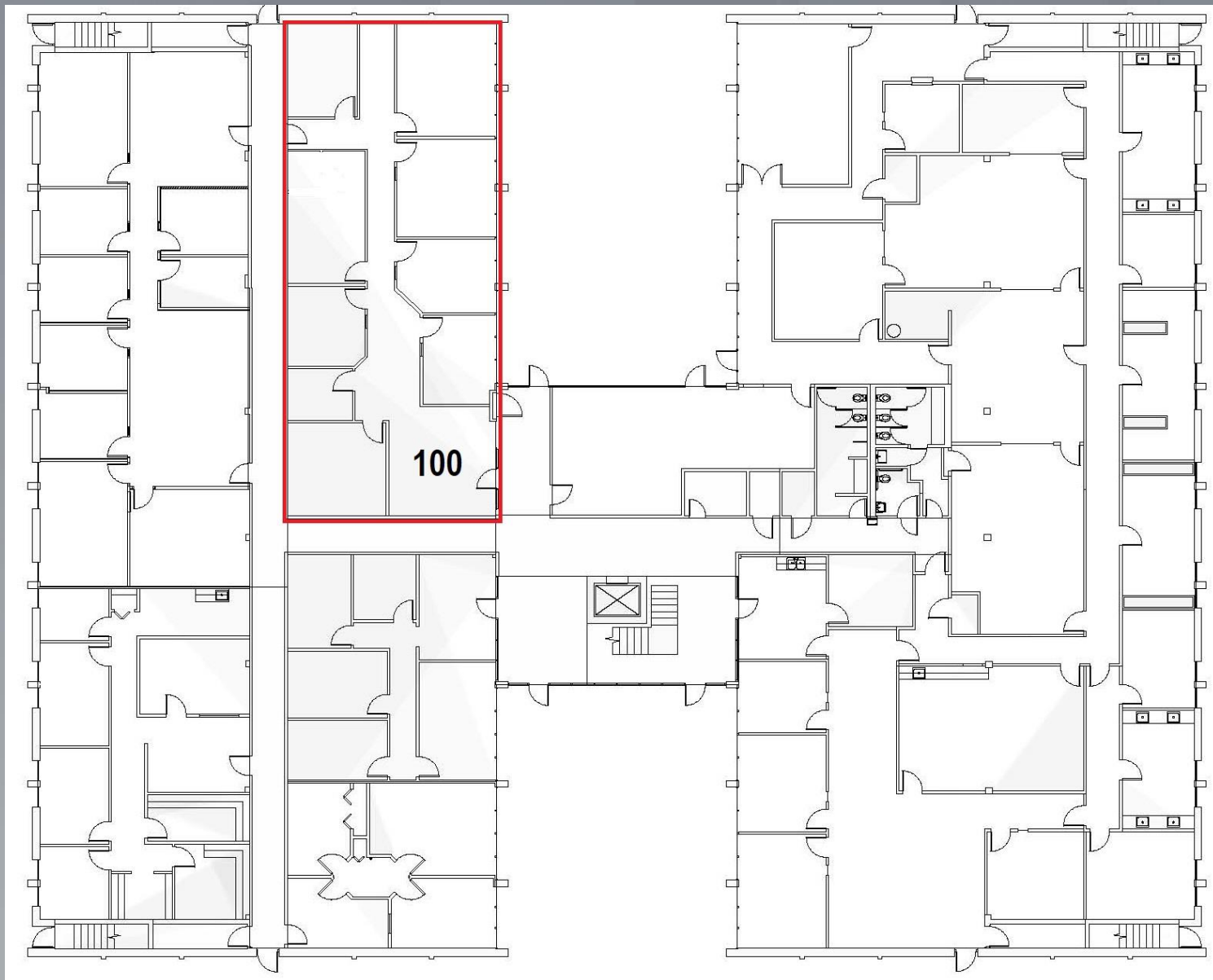
# MADISON BUILDING

9600 Koger Boulevard  
St. Petersburg, FL 33702

## AVAILABLE SPACE

Suite 100 2,719 RSF

## 1st FLOOR



### OWNER



**THE FEIL ORGANIZATION**  
[www.feilorg.com](http://www.feilorg.com)

### MANAGEMENT

**JEFFREY MANAGEMENT**  
A Division of The Feil Organization

### LEASING



727.576.1400 | [www.CBRE](http://www.CBRE)

# BAYPOINT

COMMERCE CENTER

# MADISON BUILDING

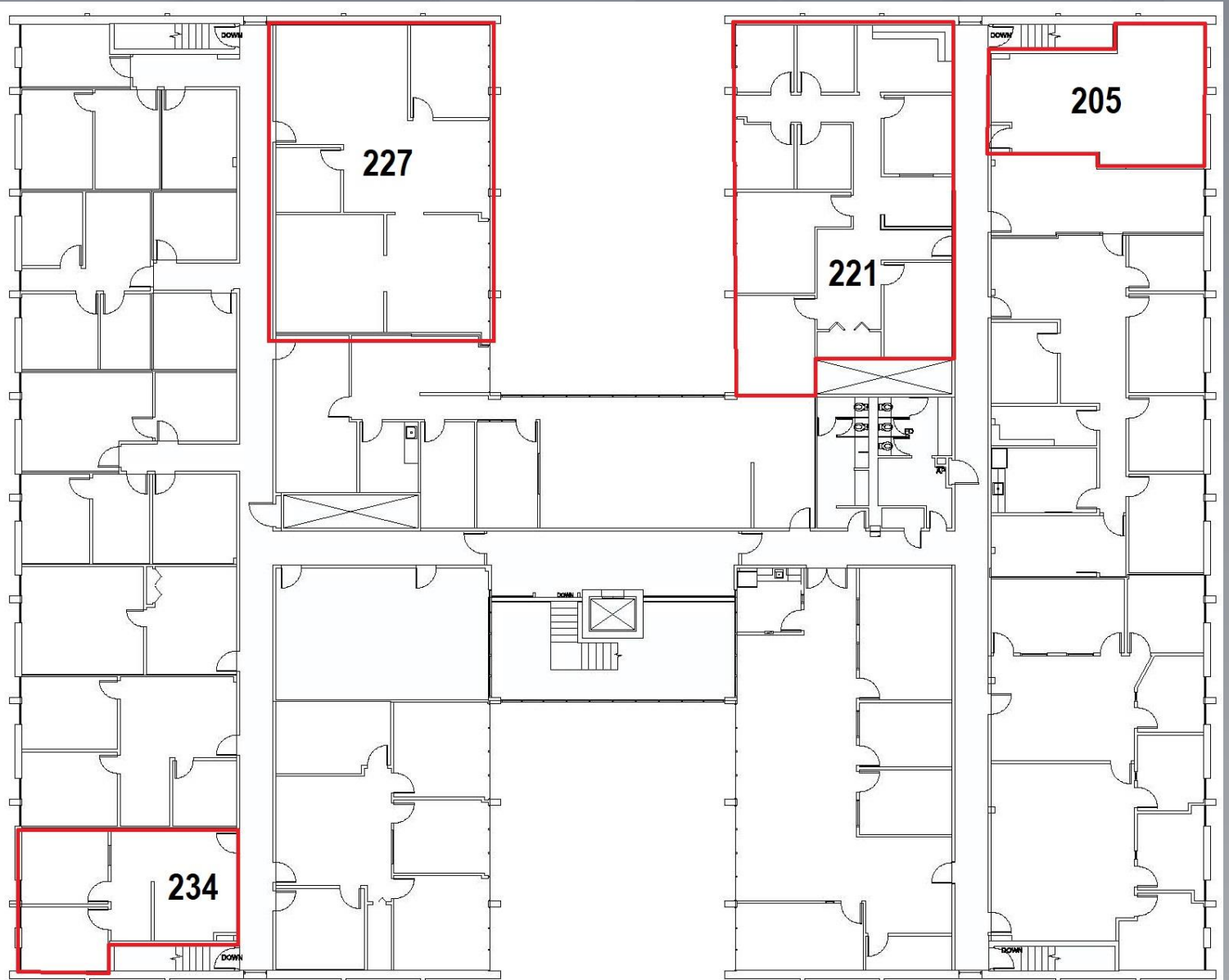
9600 Koger Boulevard  
St. Petersburg, FL 33702

## AVAILABLE SPACE

Suite 205 639 RSF  
Suite 221 1,894 RSF

Suite 234 685 RSF  
Suite 227 1,678 RSF

## 2<sup>nd</sup> FLOOR



### OWNER



THE FEIL ORGANIZATION  
[www.feilorg.com](http://www.feilorg.com)

### MANAGEMENT

JEFFREY MANAGEMENT  
A Division of The Feil Organization

### LEASING



727.576.1400 | [www.CBRE](http://www.CBRE)